



Commercial Real Estate | Retail

2150 Robertson Road Units 5 & 9

FOR LEASE

ROBERTSON CENTRE



For more information, please contact:

CHERYL KARDISH-LEVITAN
Broker
613-604-0608
cherylkl@clvgroup.com

CLV REALTY CORPORATION
Real Estate Brokerage
485 Bank Street, Suite 200
Ottawa, ON

CLV Realty Corporation, Brokerage

E. & OE.: The information contained herein regarding this property is from sources which we deem reliable and while thought to be accurate, is not guaranteed and CLV Realty Corporation, Brokerage makes no warranty or representations as to the completeness or accuracy thereof.



ROBERTSON CENTRE

PROPERTY INFORMATION

Net Rent: Starting at \$20.00 per square foot
Operating Costs: Cam & Admin \$10.20 per square foot & Realty Taxes \$7.35 per square foot/2018
Available space: Unit 5 - 1,301 Square Feet, Unit 9 - 2,135 Square Feet
Possession: Unit 5 - Immediate, Unit 9 - December 1, 2019
Tenancy: Multiple
Zoning: AM1 - Arterial Mainstreet
Parking: Lots of free parking

Description:

Robertson Plaza. High profile location offering excellent exposure fronting Robertson Road. Join anchor tenants Freshco, TD Bank, Rexall Pharmacy, Appletree Medical, Outskirts, and Dollarama. Ideal for fast food ie. sandwiches, soups, breakfast restaurants and many retail uses and services.

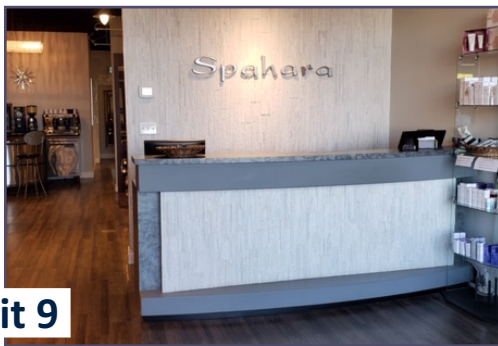
PROPERTY PHOTOS



unit 5



unit 9



E. & OE.: The information contained herein regarding this property is from sources which we deem reliable and while thought to be accurate, is not guaranteed and CLV Realty Corporation, Brokerage makes no warranty or representations as to the completeness or accuracy thereof.

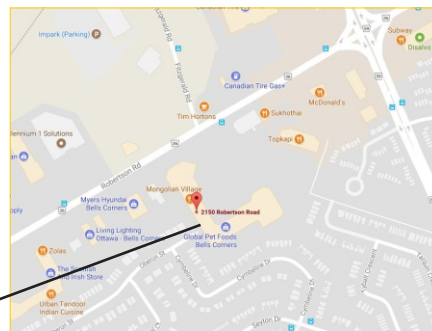
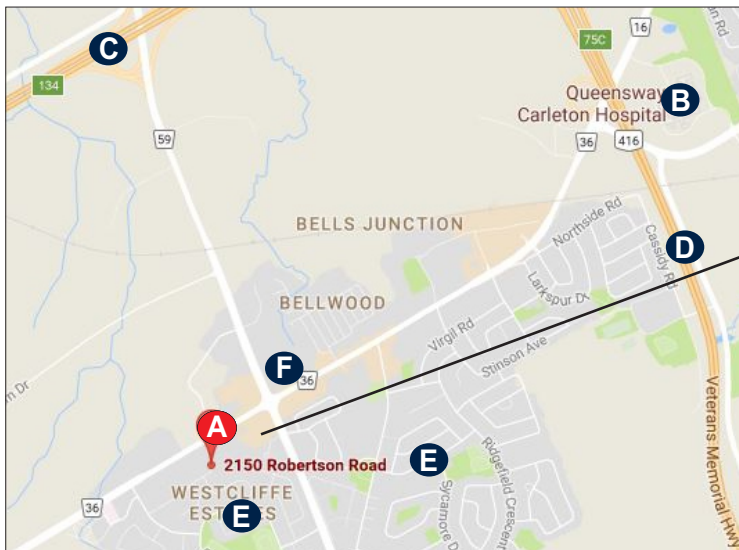
SITE PLAN



Unit 5 - 1,301
Square Feet

Unit 9 - 2,135
Square Feet

PROPERTY LOCATION

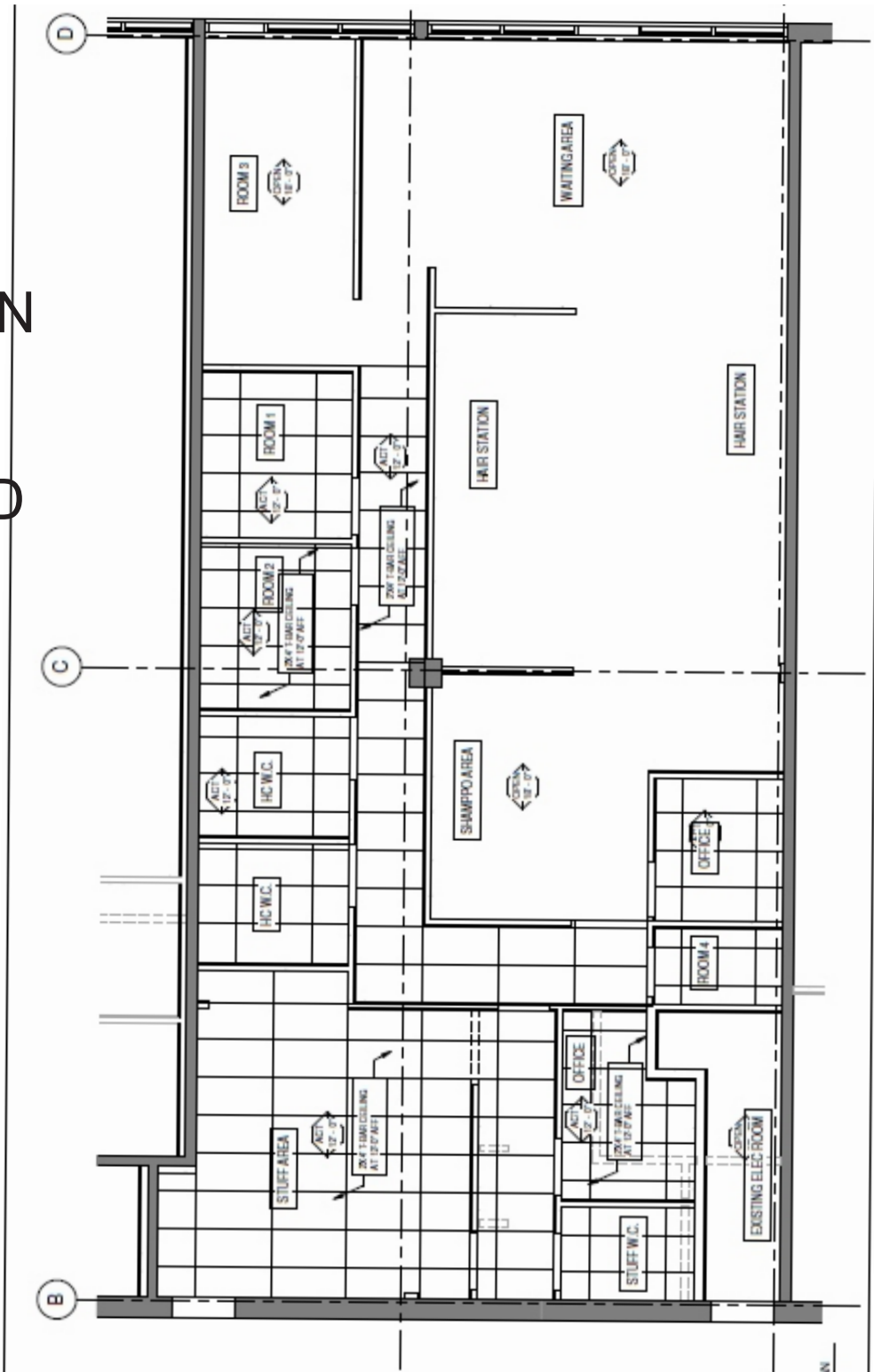


- A. Subject Property - Robertson Plaza
- B. Queensway Carleton Hospital
- C. 417
- D. 416
- E. Residential Neighbourhoods
- F. Groceries, Shopping Etc..

E. & OE.: The information contained herein regarding this property is from sources which we deem reliable and while thought to be accurate, is not guaranteed and CLV Realty Corporation, Brokerage makes no warranty or representations as to the completeness or accuracy thereof.

UNIT 9 FLOOR PLAN

CAN BE
SUBDIVIDED



E. & OE.: The information contained herein regarding this property is from sources which we deem reliable and while thought to be accurate, is not guaranteed and CLV Realty Corporation, Brokerage makes no warranty or representations as to the completeness or accuracy thereof.